



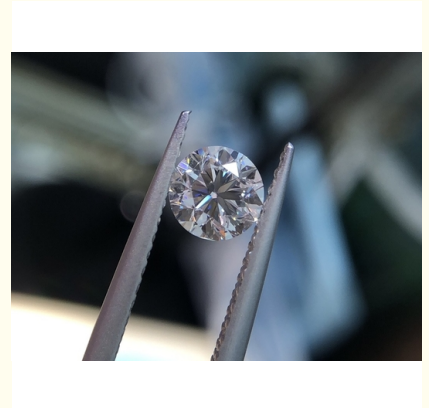
1.0CT D VS1 VG HPHT Lab Grown Diamond Round Cut For Jewelry Production

Our Product Introduction

for more products please visit us on labcreated-diamond.com

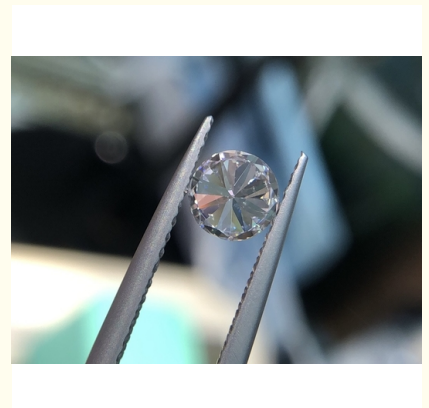
Basic Information

- Place of Origin: China
- Brand Name: HYF
- Certification: IGI(LG619439261)
- Model Number: Synthetic (lab Created)
- Minimum Order Quantity: 1pcs
- Price: \$290 per pieces
- Packaging Details: opp
- Delivery Time: 3days
- Payment Terms: L/C, T/T,PAYPAL
- Supply Ability: 100ct per days

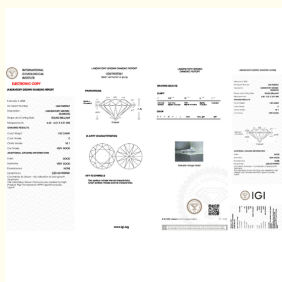


Product Specification

- Clarity: Vs1
- Color: D
- Carat: 1
- Cut: Round
- Whatsapp: +852 92979841
- Use: For Jewelry Production
- Highlight: **lab grown diamond round cut,
vs1 lab grown diamond,
vs1 lab created diamond**



More Images



Product Description

1.0CT D VS1 VG HPHT Lab Grown Diamond Round Cut IGI Certificate | LG619439261

| | |
|--------------|------------------|
| Carat Weight | 1 |
| Color | D |
| Clarity | VS1 |
| Shape | Round Cut |
| Payment | L/C, T/T, PAYPAL |

Lab grown diamonds are an ethical alternative to mined diamonds. They are created using cutting-edge technology in laboratories, using the same principles that natural diamonds require to be formed - heat, pressure, and carbon. Lab grown diamonds take just weeks to be created, but they mimic every aspect of a natural diamond visually and chemically.

Lab Diamond Stock List

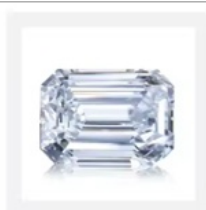
| Cert. No | Shape | Carat Weight | Color | Clarity | Cutting | Polish | Symm. | Size | LAB | Type |
|-----------|----------|--------------|-------|---------|---------|--------|-------|------------------|-----|------|
| 634446014 | Round | 0.51 | E | vvs2 | VG | GD | EX | 5.15-5.21*3.11 | IGI | HPHT |
| 636431709 | Round | 0.5 | D | VVS2 | EX | EX | EX | 5.05-5.08*3.14 | IGI | HPHT |
| 629420610 | Oval | 0.71 | D | VVS2 | EX | EX | EX | 7.11-5.04*3.06 | IGI | HPHT |
| 635489171 | Marquise | 0.84 | D | VS1 | * | VG | VG | 9.74-5.13*3.08 | IGI | HPHT |
| 606355370 | Pear | 0.88 | E | vvs2 | EX | EX | EX | | IGI | HPHT |
| 591387349 | Asscher | 0.91 | E | vvs2 | EX | EX | EX | | IGI | HPHT |
| 628400440 | Emerald | 1.02 | F | vvs2 | * | EX | VG | 6.76-4.78*3.12 | IGI | HPHT |
| 626486166 | Marquise | 1.02 | F | VS1 | * | EX | EX | 10.19-5.33*3.31 | IGI | CVD |
| 621416585 | Radian | 1.01 | F | vvs2 | * | EX | EX | 7.35-4.8*3.21 | IGI | CVD |
| 629492947 | Round | 1.04 | D | VVS2 | VG | GD | EX | 6.51-6.54*3.97 | IGI | HPHT |
| 614394156 | Princess | 1 | E | vvs2 | * | EX | EX | 5.39-5.33*3.94 | IGI | CVD |
| 617473523 | Heart | 1.52 | D | VVS2 | * | EX | EX | 6.71-8.40*4.62 | IGI | HPHT |
| 573317374 | Heart | 1.67 | E | vvs2 | * | EX | EX | 7.21-8.17*4.98 | IGI | HPHT |
| 625477259 | Marquise | 1.5 | D | VVS1 | * | EX | EX | 11.48-6.08*3.79 | IGI | HPHT |
| 624499931 | Round | 2 | E | VS1 | EX | EX | EX | 8.09-8.12*4.93 | IGI | CVD |
| 630446108 | Round | 2.07 | F | VS1 | ID | EX | EX | 8.16-8.20*5.04 | IGI | CVD |
| 626469248 | Round | 2.8 | D | VS1 | ID | EX | EX | 8.9-8.95*5.57 | IGI | CVD |
| 634434853 | Cushion | 2.53 | F | VS1 | * | EX | EX | 8.00-7.83*5.14 | IGI | CVD |
| 602327299 | Oval | 2.58 | F | VS1 | * | EX | EX | 11.34-7.65*4.76 | IGI | CVD |
| 632451928 | Round | 3 | F | VVS2 | ID | EX | EX | 9.27-9.32*5.66 | IGI | CVD |
| 628436875 | Round | 3.12 | E | VVS2 | ID | EX | EX | 9.37-9.42*5.72 | IGI | CVD |
| 633447749 | Emerald | 3.03 | D | VS1 | * | EX | EX | 9.84-6.98*4.35 | IGI | CVD |
| 632446090 | Oval | 3.05 | F | VS1 | * | EX | EX | 11.61-8.2*5.15 | IGI | CVD |
| 612315588 | Emerald | 3.64 | F | VS1 | * | VG | VG | 10.38-7.42*4.9 | IGI | CVD |
| 619439200 | Round | 4.04 | F | VS1 | ID | EX | EX | 10.31-10.34*6.22 | IGI | HPHT |
| 575394586 | Round | 4.03 | F | VVS2 | EX | EX | EX | 10.19-10.28*6.21 | IGI | CVD |
| 631425707 | Radian | 4.06 | F | VS1 | * | EX | VG | 9.29-8.2*5.73 | IGI | CVD |
| 604379034 | Princess | 4.01 | F | VS1 | * | EX | EX | 8.84-8.78*6.00 | IGI | CVD |
| 630444305 | Emerald | 4.33 | F | VS1 | * | EX | EX | 11.15-8*5.19 | IGI | CVD |
| 629495990 | Pear | 4 | F | VS1 | * | EX | EX | 14.20-8.93*5.58 | IGI | CVD |
| 635488938 | Asscher | 5.29 | E | VS1 | * | EX | VG | 9.65-9.53*6.31 | IGI | CVD |
| 627421587 | Round | 5.09 | E | VS1 | ID | EX | EX | 11.12-11.19*6.66 | IGI | CVD |
| 619433652 | Round | 5.02 | F | VS1 | ID | EX | EX | 11.07-11.10*6.66 | IGI | CVD |
| 627407348 | Princess | 5.06 | F | VS1 | * | EX | EX | 9.16-9.11*6.42 | IGI | CVD |
| 636480419 | Cushion | 5.03 | F | VVS2 | * | EX | EX | 9.49-9.46*6.41 | IGI | CVD |
| 624439140 | Oval | 5.12 | E | VS1 | * | EX | EX | 13.64-9.78*6.17 | IGI | CVD |
| 635490115 | Round | 5.06 | F | VVS2 | EX | EX | EX | 10.9-10.99*6.81 | IGI | CVD |

[Contact Us to view more diamonds](#)

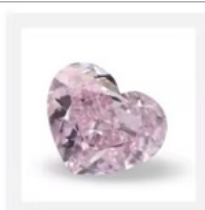
What we can supply?



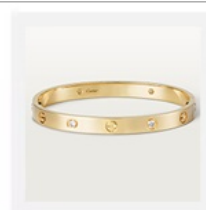
Lab Grown Diamond



Fancy Shape Diamond



Fancy Color Diamond



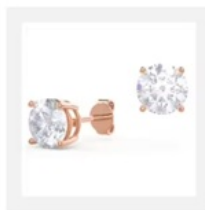
Replica jewelry



Lab Diamond Ring



Lab Diamond Necklace



Lab Diamond Earring



Lab Diamond Bracelet

Company Profile



We are pioneers in lab-grown diamonds and ethical gemstones and proud to be one of the first companies in the china to offer such.

That's why we only sell the H&F Diamond, our branded gemstone, or pure lab grown diamonds, sourced from growers committed

to using sustainable energy – both fully ethical and the better choice over traditional diamond jewellery

Exhibition

Hong Kong International
Jewelry & Gem Fair
— Exhibit every Mar. &
Sep. since 2008



Jewellery is one of our favourite gifting ideas , it entwines several different passions,envir-onmental and ethical good practice, sustainability and the delivery of excellent customer service.

H&F Diamonds have introduced a stunning everyday jewellery collection, featuring a variety of sophisticated and beautiful designs, including statement rings, necklaces and earrings, all handcrafted from solid gold and set with ethically sourced lab-grown diamonds and gemstones.



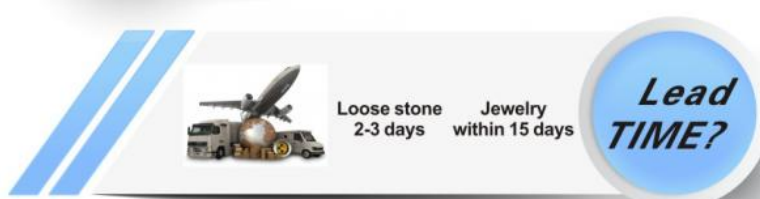
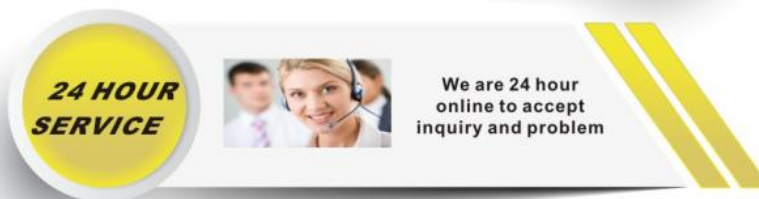
Diamond Test



Process



Our Advantages



Jewelry Customization

CUSTOM JEWELRY

LAB GROWN DIAMOND



HOW TO ORDER?



PRODUCTION PROCESS

An excellent customized experience



OEM&ODM

Just get what you want by customized orders.

MATERIAL

22K Gold

18K Gold

14K Gold

10K Gold

9K Gold

COLOR

 White Gold

 Yellow Gold

 Rose gold

GEM

 Diamond

 Lab Diamond

 Moissanite

 Sapphire

 Ruby

 Emeralds

 other

Packing



Small Gemstone



Shenzhen Hong Yun Fu Jewelry Trading Co., Ltd.



+86 15179380667



qq854308618@gmail.com



labcreated-diamond.com

Beiyuehui Building, No. 2115 Cuizhu Road, Luohu District, Shenzhen, Guangdong, China