

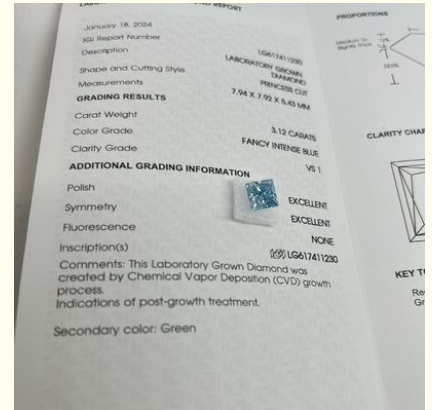


3.12CT Fancy Intense Blue Lab Made Diamonds VS1 2EX CVD Princess Cut

Our Product Introduction

Basic Information

- Place of Origin: China
- Brand Name: HYF
- Certification: IGI(LG617411230)
- Model Number: Synthetic (lab Created)
- Minimum Order Quantity: 1pcs
- Price: Contact Us
- Packaging Details: opp
- Delivery Time: 3days
- Payment Terms: L/C, T/T, PAYPAL
- Supply Ability: 100ct per days



Product Specification

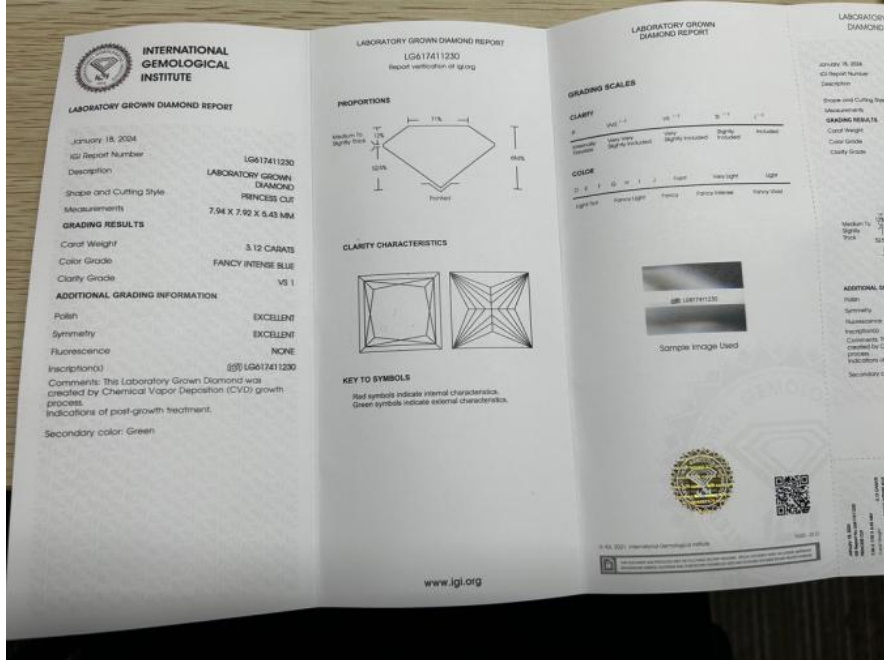
- Clarity: VS1
- Color: Fancy Intense Blue
- Carat: 3.12
- Cut: Princess
- Whatsapp: +852 92979841
- Highlight: **blue lab made diamonds,
lab made diamonds vs1 2ex,
3.12ct lab made blue diamonds**

for more products please visit us on labcreated-diamond.com

Product Description

3.12CT Fancy Intense Blue VS1 2EX CVD Lab Grown Diamond Princess Cut IGI Certificate | LG617411230

Carat Weight	3.12
Color	Fancy Intense Blue
Clarity	VS1
Shape	Princess Cut
Payment	L/C, T/T, PAYPAL



Diamond Test



Process



1.Raw stone



2.Analyze the raw stone data by computer, design the shape



3.Scribing on raw stone



4.Laser cutting



5.Edge grinding, Make shape



6.Manual polishing



7.Finished product

Our Advantages

**The Price?
GOOD
QUESTION!**

the lowest in the market
\$12.8
\$7.68

**Factory
price**

Quality

certificate

**24 HOUR
SERVICE**



We are 24 hour
online to accept
inquiry and problem

**Lead
TIME?**



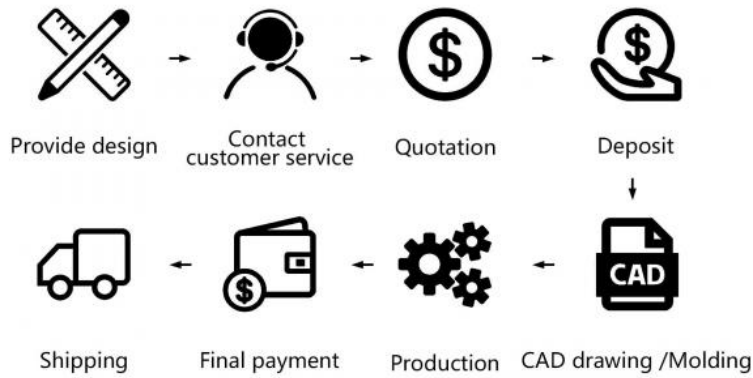
Loose stone 2-3 days Jewelry within 15 days

Jewelry Customization

CUSTOM JEWELRY LAB GROWN DIAMOND



HOW TO ORDER?



PRODUCTION PROCESS

An excellent customized experience



OEM&ODM

Just get what you want by customized orders.

MATERIAL

22K Gold
18K Gold
14K Gold
10K Gold
9K Gold

COLOR

White Gold
Yellow Gold
Rose gold

GEM

Diamond
Lab Diamond
Moissanite
Sapphire
Ruby
Emeralds
other

Packing



Small Gemstone



Shenzhen Hong Yun Fu Jewelry Trading Co., Ltd.



+86 15179380667



qq854308618@gmail.com



labcreated-diamond.com

Beiyuehui Building, No. 2115 Cuizhu Road, Luohu District, Shenzhen, Guangdong, China