

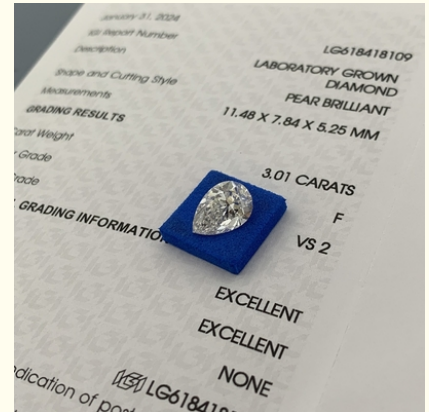


3.01CT F Color VS2 Clarity 2EX Pear Shaped Lab Grown Diamond

Our Product Introduction

Basic Information

- Place of Origin: China
- Brand Name: HYF
- Certification: IGI(LG618418109)
- Model Number: Synthetic (lab Created)
- Minimum Order Quantity: 1pcs
- Price: \$1515 per pieces
- Packaging Details: opp
- Delivery Time: 3days
- Payment Terms: L/C, T/T, PAYPAL
- Supply Ability: 100ct per days



Product Specification

- Clarity: VS2
- Color: F
- Carat: 3.01 Carat
- Cut: Pear
- Whatsapp: +852 92979841
- Highlight: vs2 lab grown pear shaped diamond,
vs2 pear shaped lab grown diamond,
f color lab grown pear shaped diamond

for more products please visit us on labcreated-diamond.com

Product Description

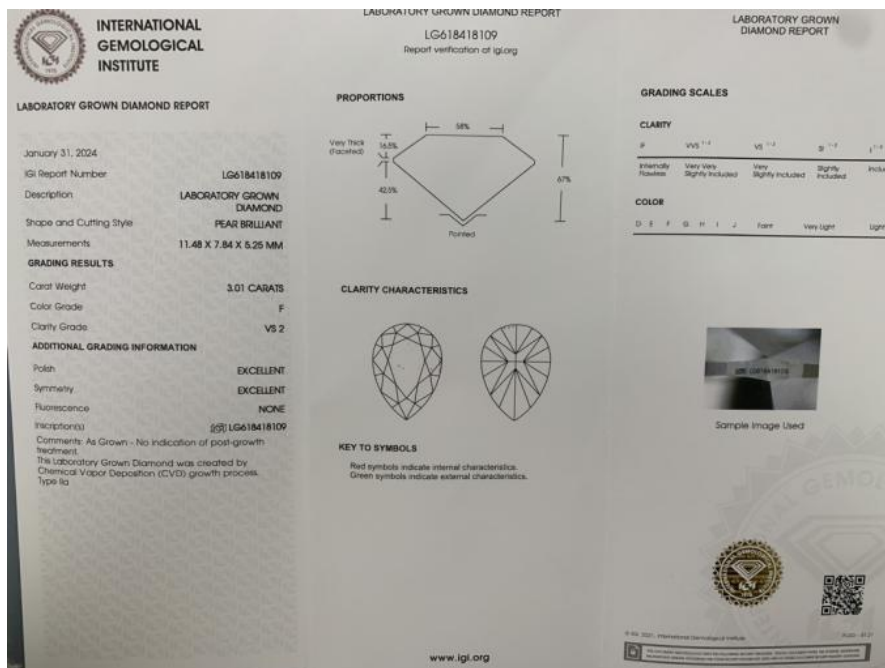
3.01CT F VS2 2EX CVD Lab Grown Diamond Pear Cut IGI Certificate | LG618418109

We have large inventory of Lab grown diamond including melee size 0.7-2.9mm, and big size 1ct to 10ct, Fancy shape also available. So if you want to make jewelry with Lab grown diamond we can customize for you

Lab grown diamond is used by natural diamond crystals to imitate its growth environment, so besides the growth environment different (such as pearl farming), its physical, chemical elements, Moh's scale of hardness and refractive radius are exactly the same as natural diamonds, naked eye can not distinguish, it also can pass the test of professional diamond test pen. You can understand that lab grown diamond belongs to 100% pure carbon diamond. Moreover, lab grown diamond is more economically affordable than natural diamond, a lab grown diamond only cost 20% ~ 30% of the price of natural diamond. Lab grown diamond is more environmental protective than ture diamond as well, it only takes a lab and maybe a couple of weeks, a Lab diamond comes out

Carat Weight	3.01
Color	F
Clarity	VS2
Shape	Pear Cut
Payment	L/C, T/T, PAYPAL

Lab grown diamond is used by natural diamond crystals to imitate its growth environment, so besides the growth environment different (such as pearl farming), its physical, chemical elements, Moh's scale of hardness and refractive radius are exactly the same as natural diamonds, naked eye can not distinguish, it also can pass the test of professional diamond test pen. You can understand that lab grown diamond belongs to 100% pure carbon diamond. Moreover, lab grown diamond is more economically affordable than natural diamond, a lab grown diamond only cost 20% ~ 30% of the price of natural diamond. Lab grown diamond is more environmental protective than ture diamond as well, it only takes a lab and maybe a couple of weeks, a cultivated diamond comes out.



Lab Diamond Stock List										
Cert.No	Shape	Carat Weight	Color	Clarity	Cutting	Polish	Symm.	Size	LAB	Type
634446014	Round	0.51	E	vvs2	VG	GD	EX	5.15-5.21*3.11	IGI	HPHT
636431709	Round	0.5	D	VVS2	EX	EX	EX	5.05-5.08*3.14	IGI	HPHT
629420610	Oval	0.71	D	VVS2	EX	EX	EX	7.11-5.04*3.06	IGI	HPHT
635489171	Marquise	0.84	D	VS1	*	VG	VG	9.74-5.13*3.08	IGI	HPHT
606355370	Pear	0.88	E	vvs2	EX	EX	EX		IGI	HPHT
591387349	Asscher	0.91	E	vvs2	EX	EX	EX		IGI	HPHT
628400440	Emerald	1.02	F	vvs2	*	EX	VG	6.76-4.78*3.12	IGI	HPHT
626486166	Marquise	1.02	F	VS1	*	EX	EX	10.19-5.33*3.31	IGI	CVD
621416585	Radian	1.01	F	vvs2	*	EX	EX	7.35-4.8*3.21	IGI	CVD
629492947	Round	1.04	D	VVS2	VG	GD	EX	6.51-6.54*3.97	IGI	HPHT
614394156	Princess	1	E	vvs2	*	EX	EX	5.39-5.33*3.94	IGI	CVD
617473523	Heart	1.52	D	VVS2	*	EX	EX	6.71-8.40*4.62	IGI	HPHT
573317374	Heart	1.67	E	vvs2	*	EX	EX	7.21-8.17*4.98	IGI	HPHT
625477259	Marquise	1.5	D	VVS1	*	EX	EX	11.48-6.08*3.79	IGI	HPHT
624499931	Round	2	E	VS1	EX	EX	EX	8.09-8.12*4.93	IGI	CVD
630446108	Round	2.07	F	VS1	ID	EX	EX	8.16-8.20*5.04	IGI	CVD
626469248	Round	2.8	D	VS1	ID	EX	EX	8.9-8.95*5.57	IGI	CVD
634434853	Cushion	2.53	F	VS1	*	EX	EX	8.00-7.83*5.14	IGI	CVD
602327299	Oval	2.58	F	VS1	*	EX	EX	11.34-7.65*4.76	IGI	CVD
632451928	Round	3	F	VVS2	ID	EX	EX	9.27-9.32*5.66	IGI	CVD
628436875	Round	3.12	E	VVS2	ID	EX	EX	9.37-9.42*5.72	IGI	CVD
633447749	Emerald	3.03	D	VS1	*	EX	EX	9.84-6.98*4.35	IGI	CVD
632446090	Oval	3.05	F	VS1	*	EX	EX	11.61-8.2*5.15	IGI	CVD
612315588	Emerald	3.64	F	VS1	*	VG	VG	10.38-7.42*4.9	IGI	CVD
619439200	Round	4.04	F	VS1	ID	EX	EX	10.31-10.34*6.22	IGI	HPHT
575394586	Round	4.03	F	VVS2	EX	EX	EX	10.19-10.28*6.21	IGI	CVD
631425707	Radian	4.06	F	VS1	*	EX	VG	9.29-8.2*5.73	IGI	CVD
604379034	Princess	4.01	F	VS1	*	EX	EX	8.84-8.78*6.00	IGI	CVD
630444305	Emerald	4.33	F	VS1	*	EX	EX	11.15-8*5.19	IGI	CVD
629495990	Pear	4	F	VS1	*	EX	EX	14.20-8.93*5.58	IGI	CVD
635488938	Asscher	5.29	E	VS1	*	EX	VG	9.65-9.53*6.31	IGI	CVD
627421587	Round	5.09	E	VS1	ID	EX	EX	11.12-11.19*6.66	IGI	CVD
619433652	Round	5.02	F	VS1	ID	EX	EX	11.07-11.10*6.66	IGI	CVD
627407348	Princess	5.06	F	VS1	*	EX	EX	9.16-9.11*6.42	IGI	CVD
636480419	Cushion	5.03	F	VVS2	*	EX	EX	9.49-9.46*6.41	IGI	CVD
624439140	Oval	5.12	E	VS1	*	EX	EX	13.64-9.78*6.17	IGI	CVD
635490115	Round	5.06	F	VVS2	EX	EX	EX	10.9-10.99*6.81	IGI	CVD

Contact Us to view more diamonds

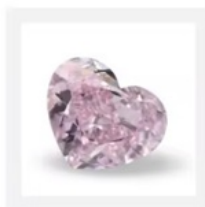
What we can supply?



Lab Grown Diamond



Fancy Shape Diamond



Fancy Color Diamond



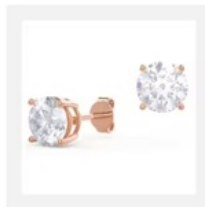
Replica jewelry



Lab Diamond Ring



Lab Diamond Necklace



Lab Diamond Earring



Lab Diamond Bracelet

Company Profile



We are pioneers in lab-grown diamonds and ethical gemstones and proud to be one of the first companies in the china to offer such.

That's why we only sell the H&F Diamond, our branded gemstone, or pure lab grown diamonds, sourced from growers committed

to using sustainable energy – both fully ethical and the better choice over traditional diamond jewellery

Exhibition

Hong Kong International
Jewelry & Gem Fair
— Exhibit every Mar. &
Sep. since 2008



Jewellery is one of our favourite gifting ideas , it entwines several different passions,envir-onmental and ethical good practice, sustainability and the delivery of excellent customer service.

H&F Diamonds have introduced a stunning everyday jewellery collection, featuring a variety of sophisticated and beautiful designs, including statement rings, necklaces and earrings, all handcrafted from solid gold and set with ethically sourced lab-grown diamonds and gemstones.



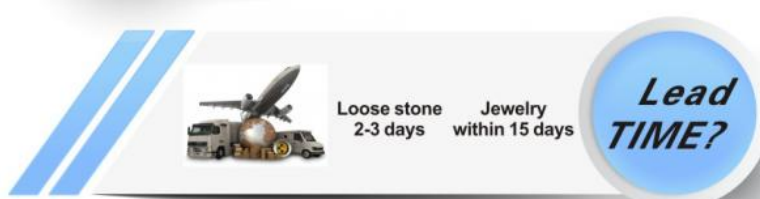
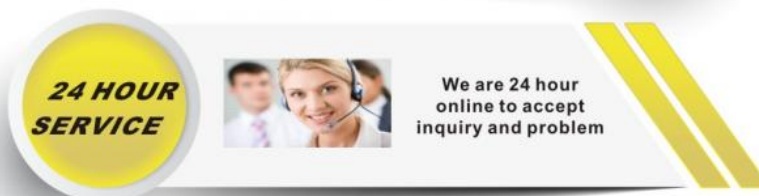
Diamond Test



Process



Our Advantages



Jewelry Customization

CUSTOM JEWELRY

LAB GROWN DIAMOND



HOW TO ORDER?



PRODUCTION PROCESS

An excellent customized experience



OEM&ODM

Just get what you want by customized orders.

MATERIAL

22K Gold

18K Gold

14K Gold

10K Gold

9K Gold

COLOR

 White Gold

 Yellow Gold

 Rose gold

GEM

 Diamond

 Lab Diamond

 Moissanite

 Sapphire

 Ruby

 Emeralds

 other

Packing



Small Gemstone



Shenzhen Hong Yun Fu Jewelry Trading Co., Ltd.



+86 15179380667



qq854308618@gmail.com



labcreated-diamond.com

Beiyuehui Building, No. 2115 Cuizhu Road, Luohu District, Shenzhen, Guangdong, China