

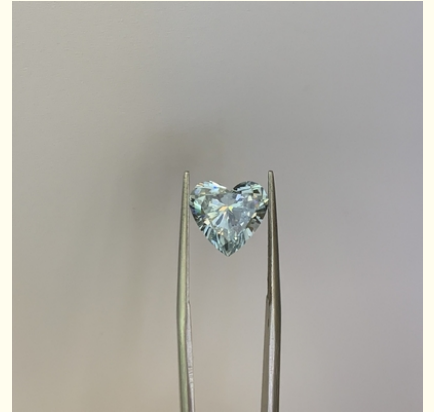


4.17 Carat SI2 Clarity Blue Grown Brilliance Diamonds Heart Cut

Our Product Introduction

Basic Information

- Place of Origin: China
- Brand Name: HYF
- Certification: 617411372
- Model Number: Synthetic (lab Created)
- Minimum Order Quantity: 1pcs
- Price: Contact Us
- Packaging Details: opp
- Delivery Time: 3days
- Payment Terms: L/C, T/T, PAYPAL
- Supply Ability: 100ct per days



Product Specification

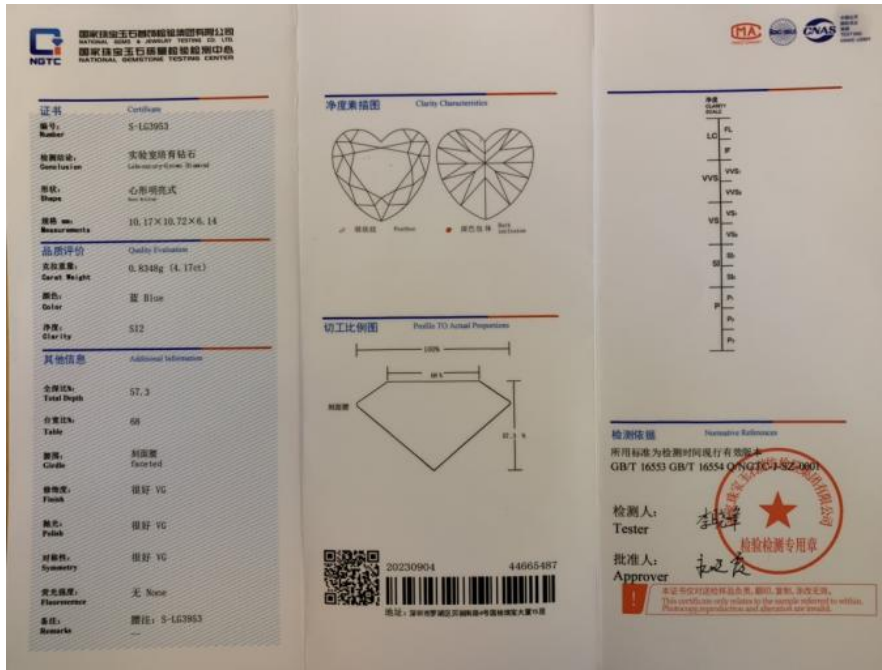
- Clarity: SI2
- Color: Fancy Intense Greenish Blue
- Carat: 4.17
- Cut: Heart
- Whatsapp: +852 92979841
- Highlight: **blue grown brilliance diamonds,
grown brilliance diamonds heart cut,
blue laboratory grown diamonds**

for more products please visit us on labcreated-diamond.com

Product Description

4.17ct Lab Grown Diamond Heart Cut CVD Fancy Intense Greenish Blue SI2 2VG N NGTC | SLG3954

Carat Weight	4.17
Color	Fancy Intense Greenish Blue
Clarity	SI2
Shape	Heart Cut
Payment	L/C, T/T, PAYPAL



Process



1. Raw stone



2. Analyze the raw stone data by computer, design the shape



3. Scribing on raw stone



4. Laser cutting



5. Edge grinding, Make shape



6. Manual polishing



7. Finished product

Our Product Introduction

for more products please visit us on labcreated-diamond.com

Our Advantages

**The Price?
GOOD
QUESTION!**

the lowest in the market
\$12.8
\$7.68

**Factory
price**

Quality

certificate

**24 HOUR
SERVICE**



We are 24 hour
online to accept
inquiry and problem

**Lead
TIME?**



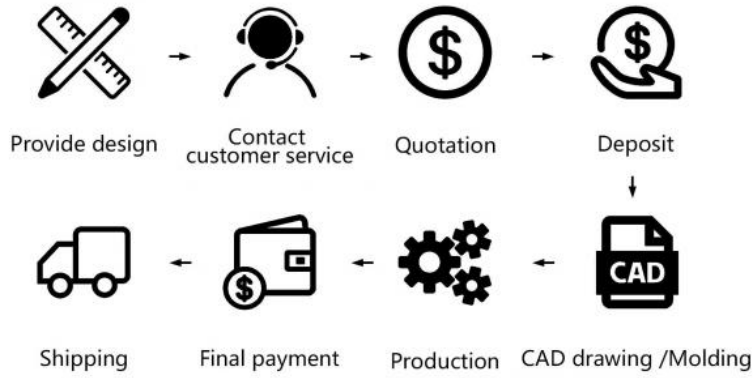
Loose stone 2-3 days
Jewelry within 15 days

Jewelry Customization

CUSTOM JEWELRY LAB GROWN DIAMOND



HOW TO ORDER?



PRODUCTION PROCESS

An excellent customized experience



OEM&ODM

Just get what you want by customized orders.








MATERIAL

22K Gold
18K Gold
14K Gold
10K Gold
9K Gold

COLOR

 White Gold
 Yellow Gold
 Rose gold

GEM

 Diamond
 Lab Diamond
 Moissanite
 Sapphire
 Ruby
 Emeralds
 other

Packing



Small Gemstone



Shenzhen Hong Yun Fu Jewelry Trading Co., Ltd.

+86 15179380667

qq854308618@gmail.com

labcreated-diamond.com

Beiyuehui Building, No. 2115 Cuizhu Road, Luohu District, Shenzhen, Guangdong, China