



## 0.1 Carats Lab Created Diamond Hoop Earrings VVS Clarity HPHT Rond Cut

Our Product Introduction

for more products please visit us on [labcreated-diamond.com](http://labcreated-diamond.com)

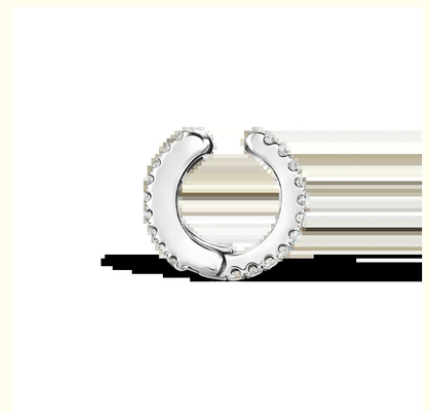
### Basic Information

- Place of Origin: China
- Brand Name: H&F
- Certification: IGI
- Model Number: HF-035
- Minimum Order Quantity: 1
- Price: Pls contact us
- Packaging Details: opp
- Delivery Time: 5-8days

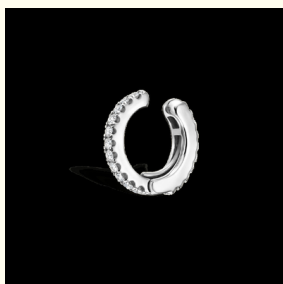


### Product Specification

- Jewelry Type: Rings
- Setting Type: Prong Setting
- Diamond Carat Weight: 0.1 Carats
- Gemstone Shape: Round
- Gemstone Type: Lab Grown Diamond
- Style: Classic
- Size: 5# 6# 7# 8# 9#
- Metal Type: 18K 14K 10K 9K Platinum
- Gemstone Color: DEFGH
- Weight: Pls Contact Us
- Highlight: **0.1 Carats Diamond Hoop Earrings, VVS Clarity Diamond Hoop Earrings, Rond Cut Diamond Hoop Earrings**



### More Images



## Product Description

18K 14K 10K Solid Gold Customized Classics Jewelry VVS Clarity HPHT Pear Cut Lab Grown Diamond Hoop Earrings

**H&F, THE BEST WHOLESALE OR LAB DIAMOND**

HONGYUNFU JEWELRY(SHENZHEN) TRADING CO



ODM

OEM



15  
YEAR

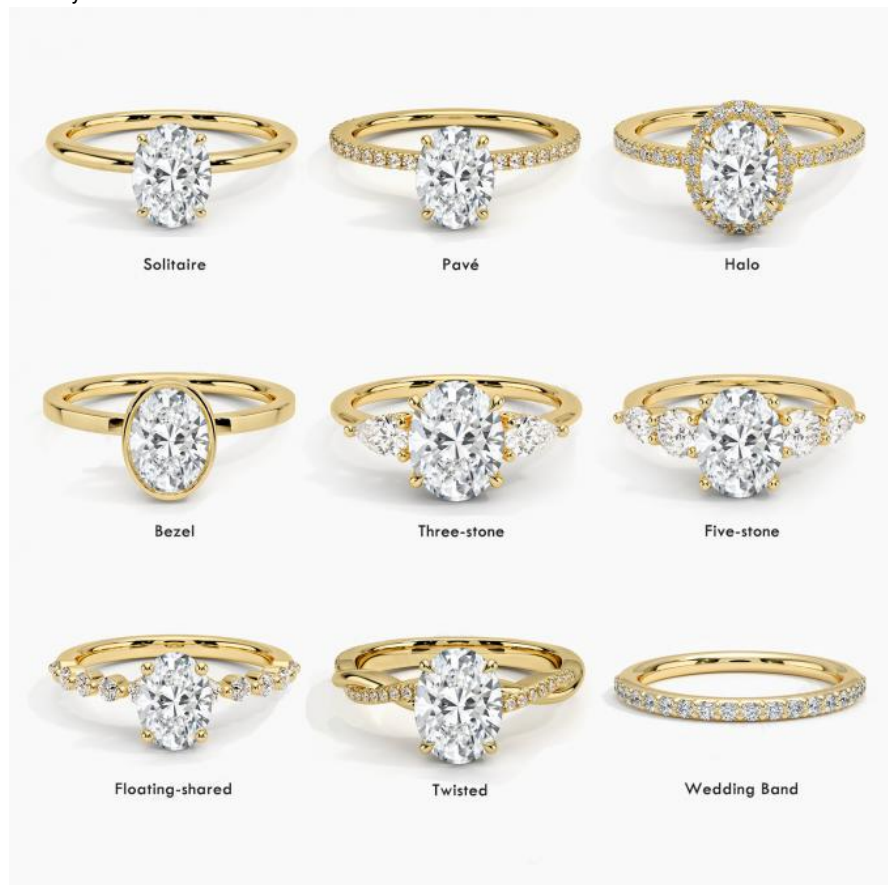
## CUSTOMIZE FOR YOU



- Laser engraving **LOGO**
- Custom design and **band design** is welcomed
- **1 piece** is welcomed

## ALL JEWELRY SUPPORT CUSTOMIZATION

Factory



Name	HF 18K 14K 10K 9K Platinum Lab Grown Diamond Earrings For Women
Metal	White gold, can be yellow gold, rose gold, Platinum
Gold Weight	Pls contact us
Main Stone	Lab grown diamond
Setting Style	Prong setting
Ring Size	7#, pls tell us your size
Earrings Type	Earrings
Occation	Engagement, Wedding, Anniversary Gift, Ect
Payment Term	T.T, Western Union
Shipment	DHL, UPS, Fedex, EMS

**CREATE YOUR OWN LAB GROWN RING**

## 1 Choose Matel.

18K

14K

10K

9K

PT

## 2 Choose Color.



WHITE



GOLD



PINK

## 3 Choose Designs.



Solitaire



Accents



3 Stone



Bezel



Halo



Bypass



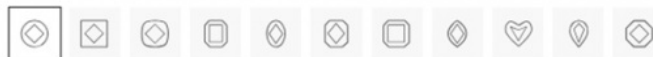
Bridal



Criss Cross

## 4 Choose Carats&Color&Clarity&Shape

Shape ?



Color ?



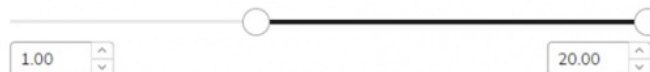
Clarity ?



Cut ?



Carat ?



Price



All Customization is **adjusted according to your budget and needs**

## MORE JEWELRY STYLES



HF-039(R)



HF-066(R)



HF-124(R)



HF-212(R)



HF-078(R)



HF-109(R)



HF-053(R)



HF-018(R)



HF-235(R)



HF-071(R)



HF-163(R)



HF-255(R)



HF-137(R)



HF-091(R)



HF-081(R)



HF-059(R)



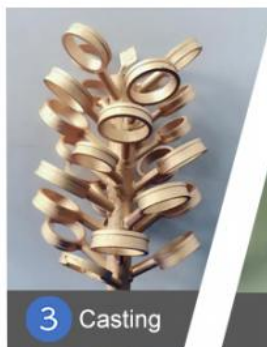
HF-112(R)



HF-076(R)



# MAKING PROCESS



# ABOUT H&F JEWELRY

15 years of experience, focusing on jewelry

## ***Exhibition***

Hong Kong International  
Jewelry & Gem Fair  
—— Exhibit every Mar. &  
Sep. since 2008





## FAQ

### 1. What is IGI certificate?

International Gemological Institute (IGI) diamond certificate assure the value and quality of your diamond. The report detail key characteristics of each diamond. It is the most authoritative institution in the world for diamond cut assessment.

### 2. What are the "4C"?

It is Carat (size), Color, Clarity and Cut. Every diamond is specifically graded on these features. The diamond price will be difference based on the different 4C result on the report.

### 3. What is "Cut"?

The cutting directly affects the fire and sparkle of the diamond. Unprocessed diamonds have no luster. After well-trained masters' design and sculpt, the diamond will make full use of the nature of light to present a rainbow-like "fire color". Cut



standard: Excellent, Very Good, Good, Poor.

4. "Eye clean" means?

It is clean from an unaided eye in a face-up position from a distance of 8 to 10 inches. It usually be eye-clean of VS2 or higher quality. The diamonds of SI1, SI2 and I1 need to be visually inspected to determine whether any inclusions are visible from the top.

5. Are the diamond in website available?

Yes, as the manufacture of lab grown diamond, we have the diamond with enough stock and competitive price. 6. How can I confirm the diamond I received is I ordered? We could supply the diamond with IGI certificate, it will have the code on the diamond girdle which is same with the code on certificate.



**Shenzhen Hong Yun Fu Jewelry Trading Co., Ltd.**



+86 15179380667



qq854308618@gmail.com



labcreated-diamond.com

Beiyuehui Building, No. 2115 Cuizhu Road, Luohu District, Shenzhen, Guangdong, China